

ACT: 0000

Réf. : UX0ME300PE

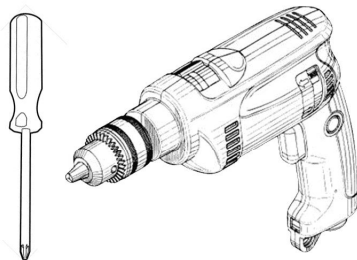
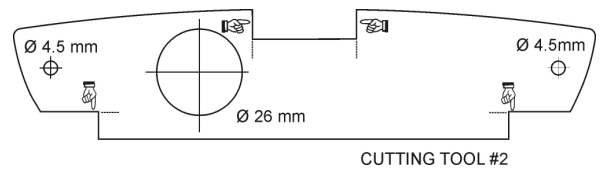
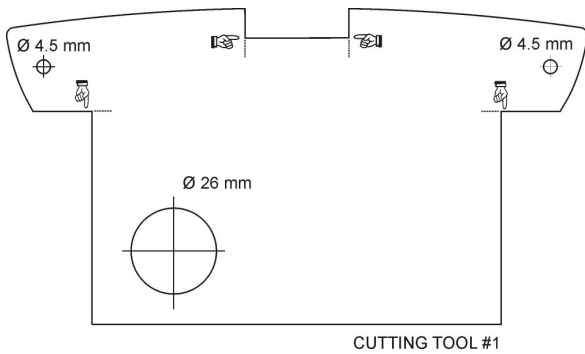
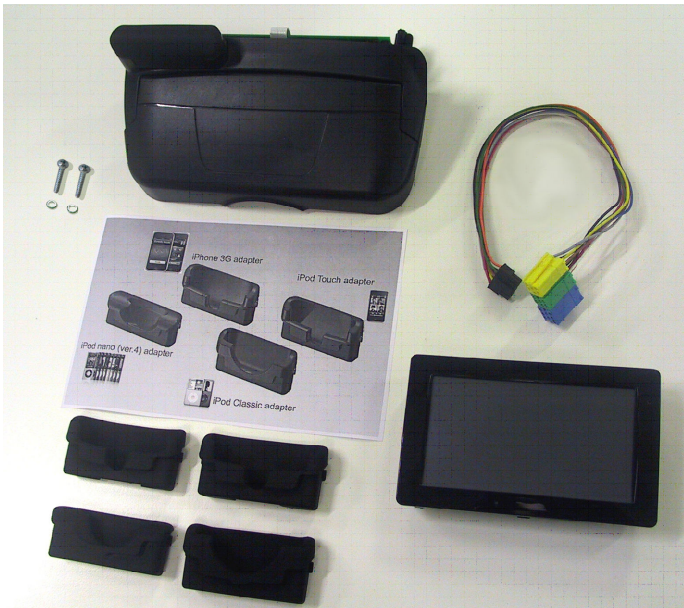
N°OPR : → 4 →

ACT: 0000

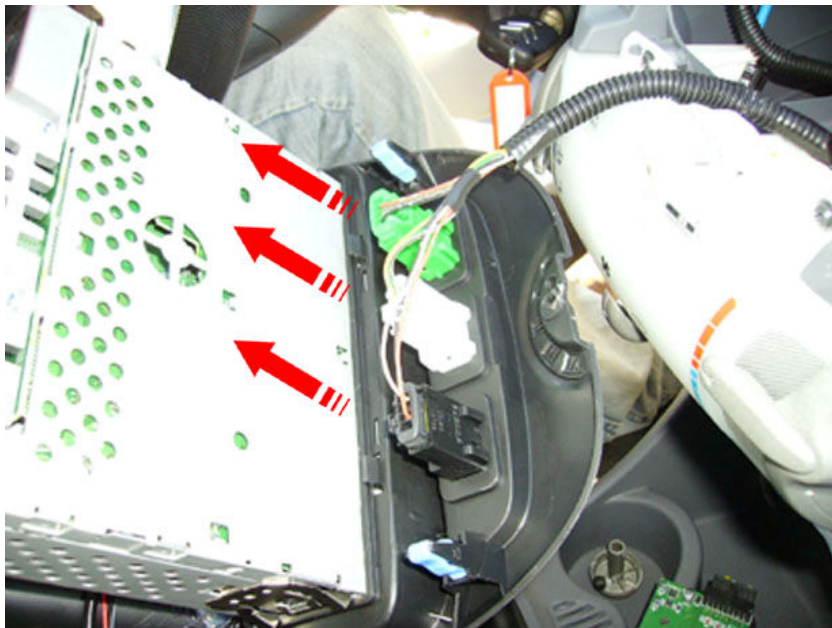
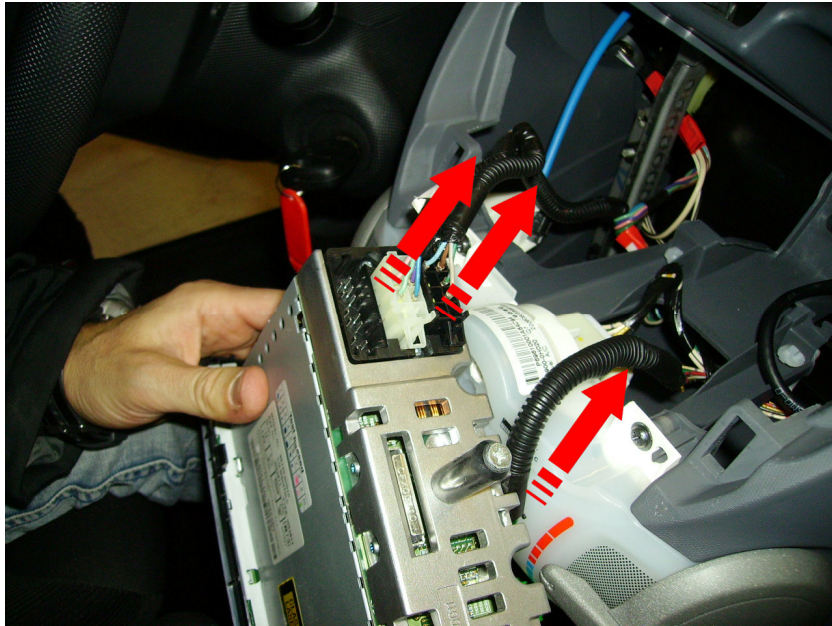
Réf. : UX0ME2A0PS

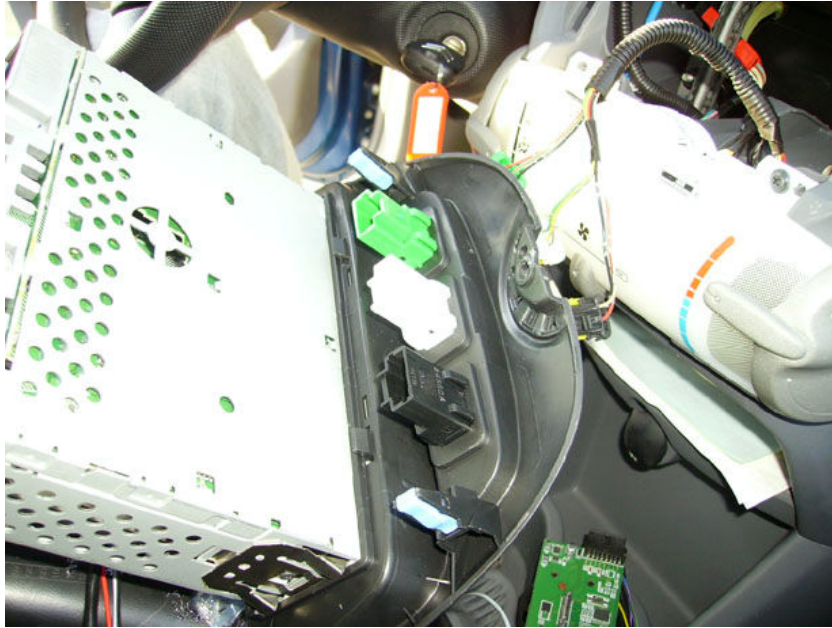
N°OPR : → 4 →

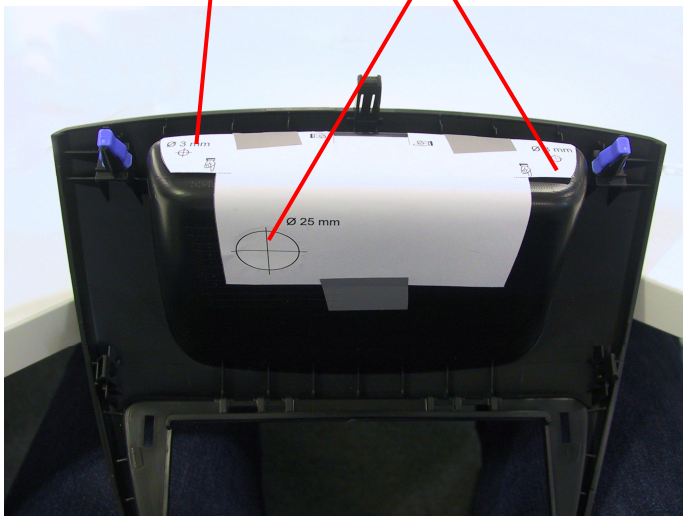
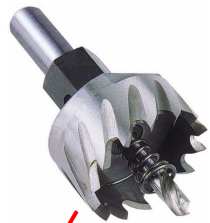
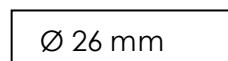
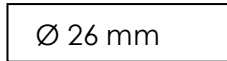
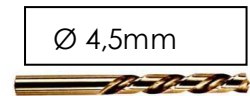
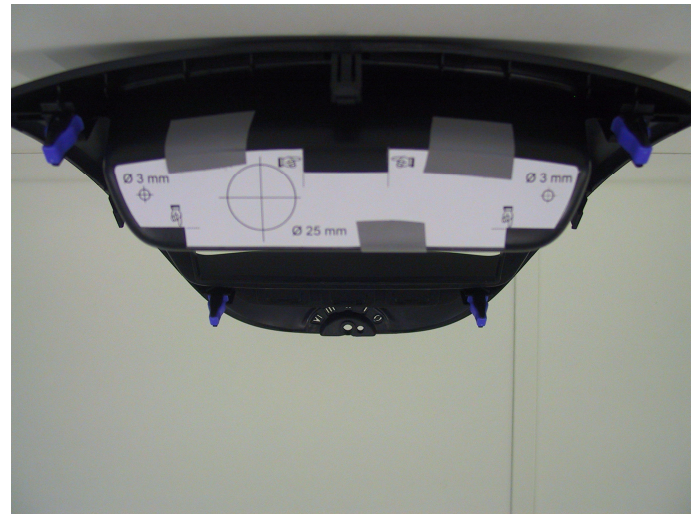
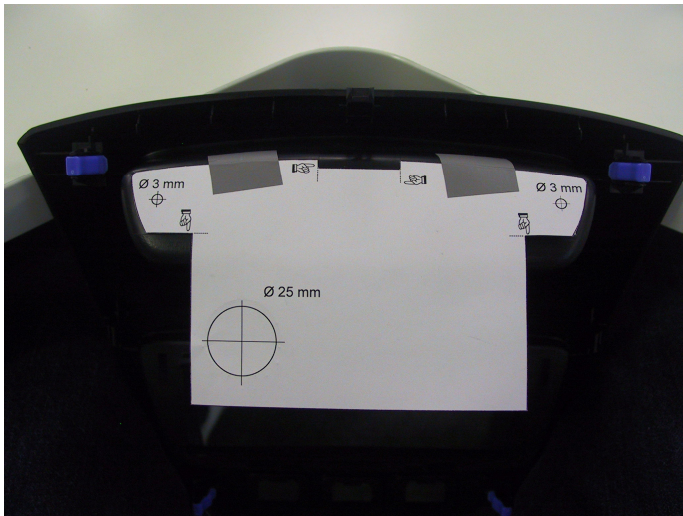
FR NOTICE DE POSE A USAGE PROFESSIONNEL / LES PHOTOS ET LES DESSINS NE SONT PAS CONTRACTUELS
 GB FITTING INSTRUCTIONS FOR PROFESSIONAL FITTERS / THE PHOTOGRAPHS AND THE DRAWINGS ARE NOT CONTRACTUAL
 ES INSTRUCCIONES DE MONTAJE PARA USO PROFESIONAL / LAS FOTOGRAFÍAS Y LOS DIBUJOS NO SON CONTRACTUALES
 P MANUAL DE MONTAGEM PARA UTILIZAÇÃO PROFISSIONAL / AS FOTOGRAFIAS E OS DESENHOS NÃO SÃO CONTRATUAIS
 DE MONTAGEANLEITUNG FÜR PROFESSIONNELLEN EINSATZ / DIE FOTOS UND DIE ZEICHNUNGEN SIND NICHT VERTRAGLICH
 IT ISTRUZIONI DI POSA AD USO PROFESSIONALE / LE FOTOGRAFIE ED I DISEGNI NON SONO CONTRATTUALI
 NL MONTAGEHANDLEIDING VOOR PROFESSIONEEL GEBRUIK / DE FOTO'S EN DE TEKENINGEN ZIJN NIET CONTRACTUEEL











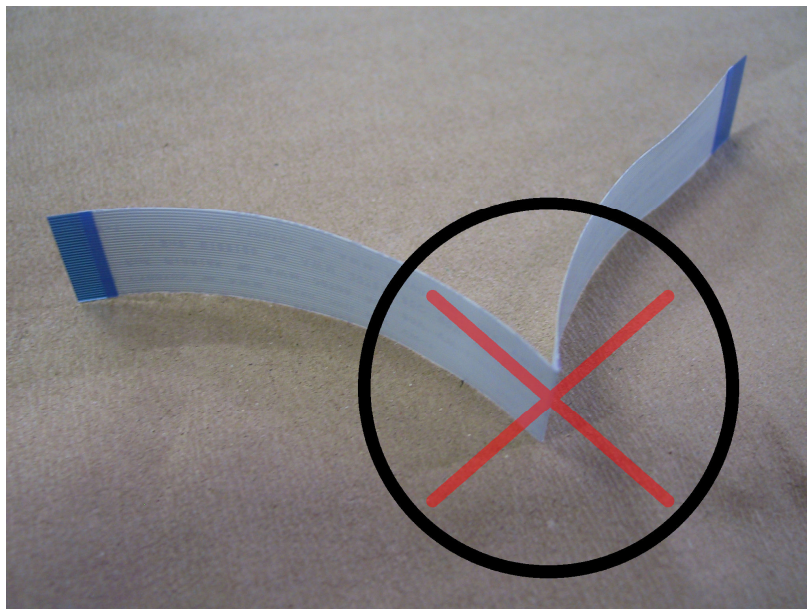
Date de création : 11/10/2010
 Indice d'évolution :
 Date de modification : 19/09/2012

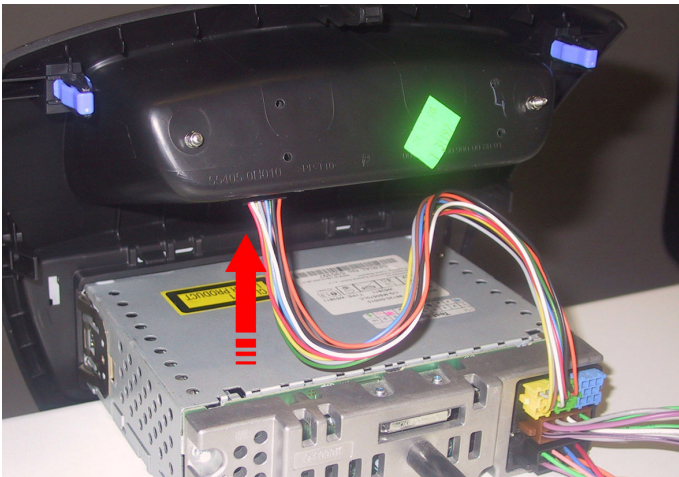
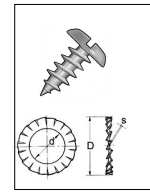
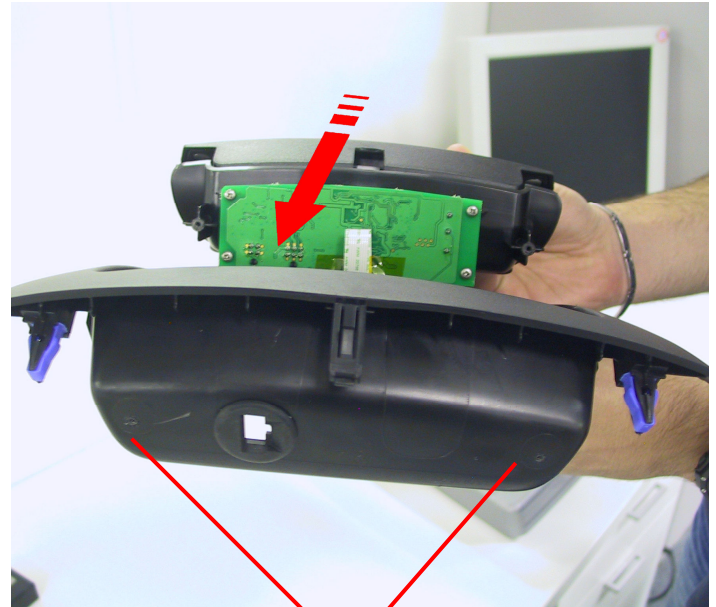
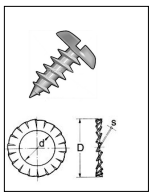
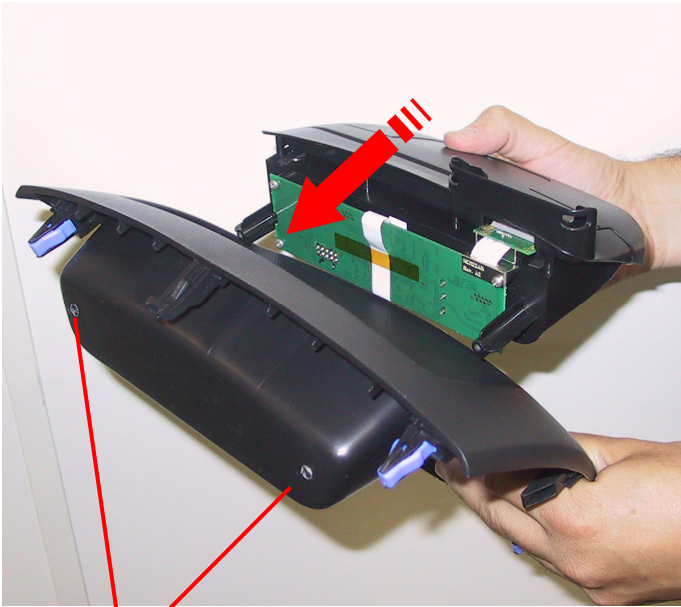


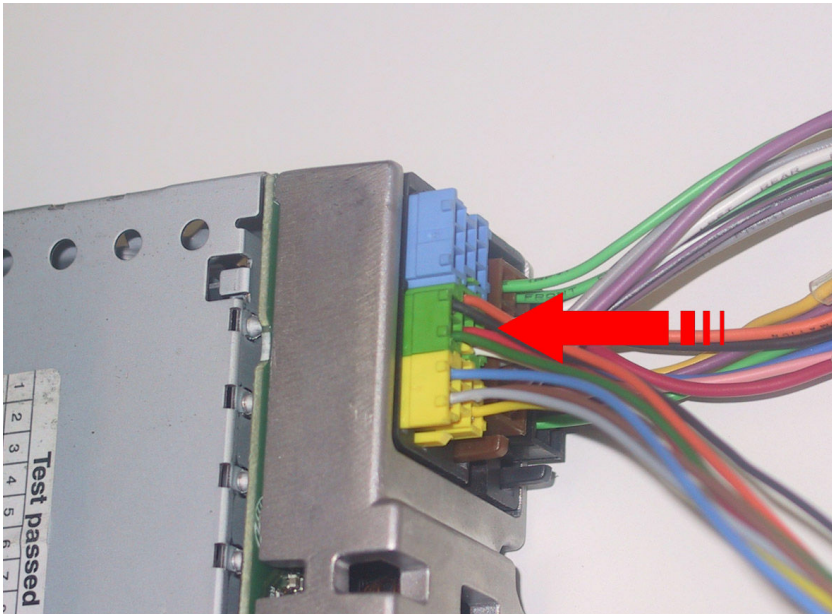
This page is valid for both procedures

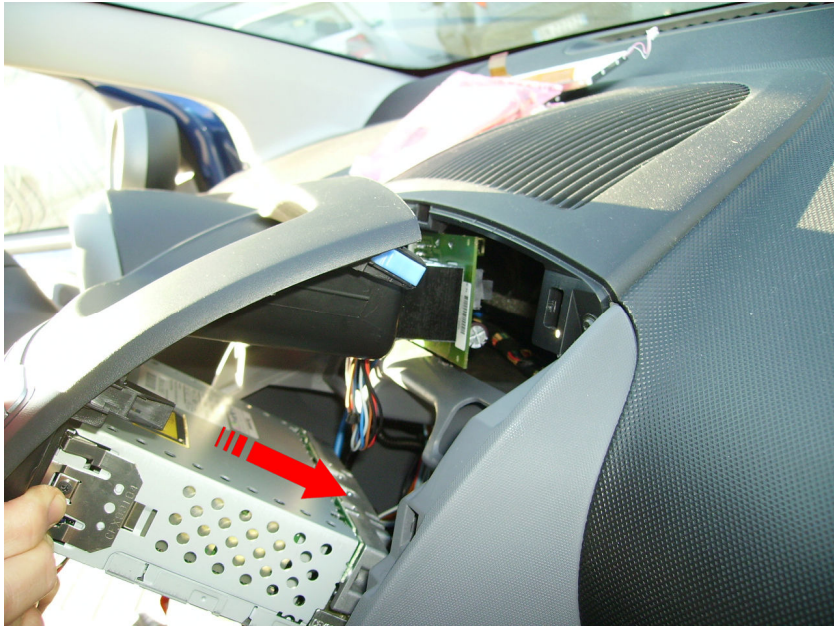


Pull upwards the flat cable (see above picture). The shape of the cable must be a smooth curve. Pay attention do not fold the cable (see below picture)









Date de création : 11/10/2010
Indice d'évolution :
Date de modification : 19/09/2012